



What is New in VCollab 26.1

VCOLLAB

Visual Collaboration Technologies Inc.

VMoveCAE 26.1 Updates

Enhancements

- Added support for Abaqus ODB 2026 files.
- ODB files can now be automatically loaded without upgrading by detecting the ODB version.

Bug fixes

- Fixed Marc rotations when using user-defined coordinate systems.
- Resolved ODB auto-upgrade permission issues in Windows when files are located in the C: drive.
- Fixed Issues related to Unicode characters in Cax file name
- Fixed VMoveCAEsubmit not translating results when DERIVED and MAPTYPE attributes are present.
- Corrected HyperMesh component loading.
- Fixed GTK warning messages on CentOS Stream 9, RHEL9, and Ubuntu 24.04.
- Fixed Set Preference dialog not storing previous options.
- Fixed Unicode file/folder name issues in CaeInfo /CaxInfo.
- Fixes issue of loading insight case files
- Added write-permission validation for the output file path before proceeding with CaeInfo export
- Fixes crashing issue with d3plot file
- Fixes translation issue with optistruct .h5 files
- Fixes issue with loading certain inp files

VMoveX 26.1 Updates

Bug fixes

- Multiple File Support for Converge H5 Files – Users can now translate multiple Converge .h5 files in a single operation.
- Multi-Phase Support for Fluent H5 Files – Added the ability to handle multi-phase simulations in Fluent .h5 files.
- Resolved application crash while saving CAx files generated from VMoveX.
- Fixed loading issue for Converge files containing no parcel data.
- Corrected filtering of unsupported results for VTK files.
- Fixed Unicode file loading issues.
- Fixed issue with exporting unwanted results for features.
- Fixed loading issues for VTK and VTP files.
- Fixed issue for loading Converge file using Positional arguments in VMoveXSubmit

VCollabPro 26.1 Updates

Enhancements

- Python version is upgraded to 3.12.12 as a security update

API Updates

- pxGetPartsAssociated() - Supports for Element ID also
- xAddPartUserAttribute() - Supports integer , float and string data types
- xFitWindowViewEx() - Supports multiple bounding box options (view oriented / global coordinate)
- pxGetPartListForType() - Option to get part name list based on the geometry type (Point, Line and Triangles)
- pxGetPartIDListForType – Option to get part IDs based on the geometry type (Point, Line and Triangles)
- xGenerateImageEx() - To generate image for user defined dimension

Bug Fix

- Feature Edge issue with Cad model comparison is fixed
- Export Elemental Result crash issue is fixed
- Issue in vcResultUtil.GetCAEResultInstObj() method is fixed
- Import Result crash issue is fixed
- Fixed XY Plot issue where Hotspot IDs Not Getting All of the Probed Points
- Fixed Creating %Change in Forces Results Issue
- Fixed the issue where Deform mesh icon is displaying OFF status while playing the animation

VMoveCAD and VCollabWeb 26.1 Updates

VMoveCAD

- CatiaV6 is supported up to R2026x
- UG NX is supported up to UGNX2512 (until 2512.1700)
- SolidWorks is supported up to 2026
- SolidEdge is supported up to 2026

VCollabWeb

- Fixed the issue where the color plot state was not set in the viewpoint
- Fixed the issue where the datum line was disappearing in XYPlot

VCollab 25.2 Enhancements

VCollabPro

- Optimized to reduce the loading time of CAX and saving time of WCax.
- In Probe menu, **Deep probe** Option is provided to probe nodes, by penetrating transparent surface.
- Rich Text labels => bug fixes
- Part User Attributes API: add part attributes that can be saved into CAX

VCollabPro

- New Python APIs
 - pxGetAssemblyIDListEx
 - pxGetChildNodeIDListEx
 - xGetAssemblyID
 - xGetAssemblyName
 - pxGetPartIDListEx
 - xlsPartVisibleEx
 - xAddPartUserAttribute
 - xAddPartUserAttributeEx
 - xDeletePartUserAttribute
 - xDeletePartUserAttributeEx
 - xGetPartUserAttributeValue
 - pxGetPartUserAttributeValues
 - pxGetPartUserAttributeKeys
 - xClearPartUserAttributes
 - xGetPartUserAttributeValueType
 - pxGetPartUserAttributeValueTypes

VMoveCAE 25.2 Enhancements

LS-Dyna Key and D3plot Format Fixes

- Issues with the Key files with the ELEMENT_SHELL_OFFSET_COMPOSITE are fixed
- Issues with PARAMETER_EXPRESSION keyword are fixed
- Support for reading and exporting component keyword related properties as attributes
- Fixes issues with Altair Hyperview comments in LS-Dyna keyword files

Abaqus ODB related bug fixes

- Support for VNSQ/AVNSQ results from ODB files
- Fixed issues with incorrect Contact pressure error indicator values

Ansys RST related Bug Fixes

- Bug fixes for the issue with Ghost cells generated
- Issues with Wrong temperature values for CONTA172 elements

VMoveCAE 25.2 Enhancements

MSC.Marc Enhancements & Bug Fixes

- Quadratic 13-node pyramid elements (Element type 218) are now fully supported by VMoveCAE
- Marc t16 results mismatch issues due to wrong reading of section labels is fixed
- Fixed Issues with wrong rigid body translations
- Fixes issues with wrong rigid body rotations

Nastran & Optistruct fixes

- H5 files support by OptiStruct are now supported in VMoveCAE
- VMoveCAE now supports .fem extension
- H5 files generated by Nastran with single precision datasets are now supported.
- HDF5OUT PRECISION 32

VMoveX 25.2 Enhancements

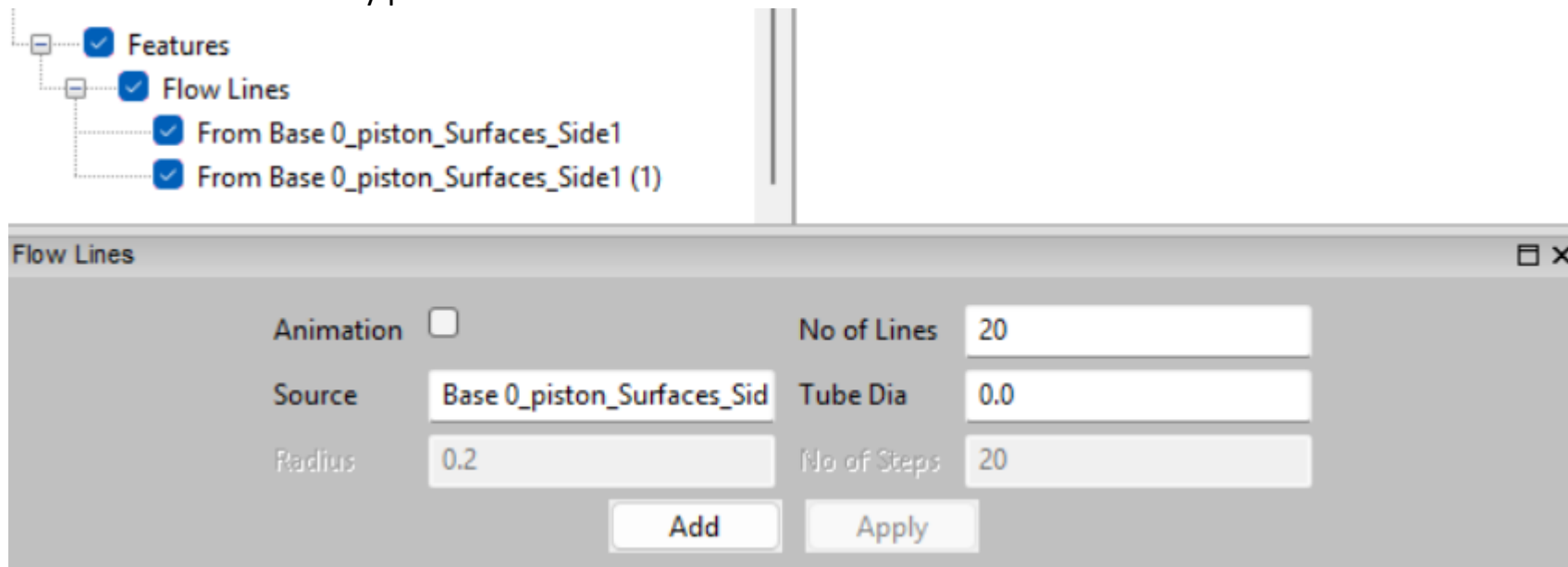
- **Instance Filtering**
- **Enhanced GUI Interactivity** – improved user experience with **duplicate feature handling**, and **on-selection property display**.
- **Metadata Export** – added capability to **export metadata** to an **output XML file**.
- **CGNS Transient Support** – extended support to handle **transient-state CGNS files**.
- **Iso-Surface Creation** – enabled **iso-surface generation** for **selected components** through **VMoveXSubmit**.

VMoveX 25.2 Enhancements

Instance Filtering – Enables users to select specific instances for translation, either through the **GUI** or by using a **parameter file**.

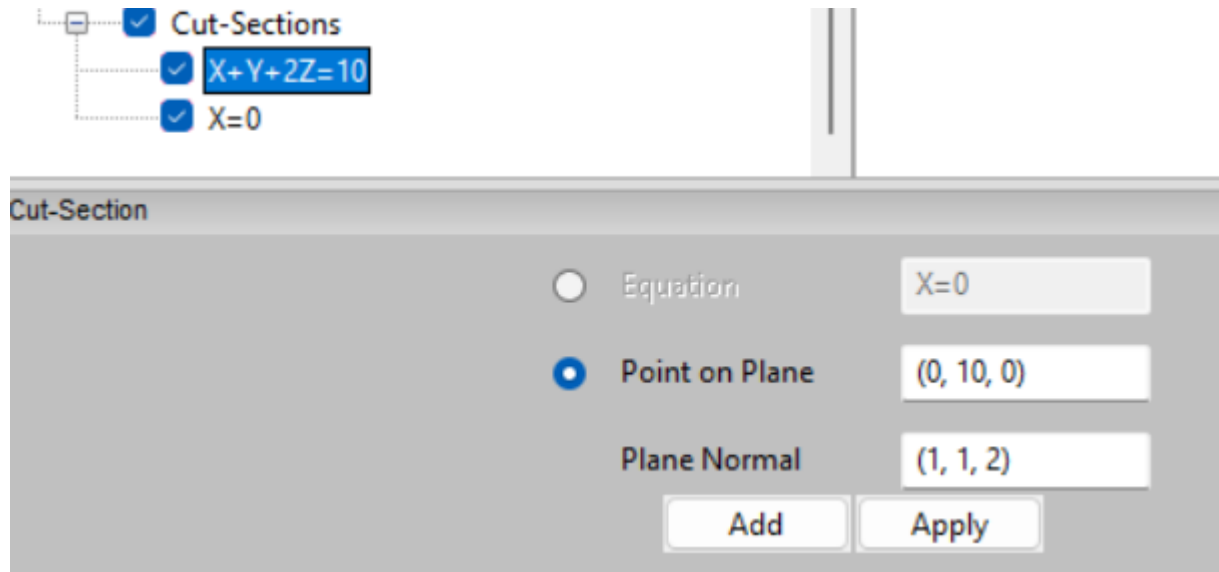


Duplicate Feature Handling – Allows creation of multiple **FlowLines** or **StreamAnimations** under the same name with different inputs; features are automatically prefixed for distinction.



VMoveX 25.2 Enhancements

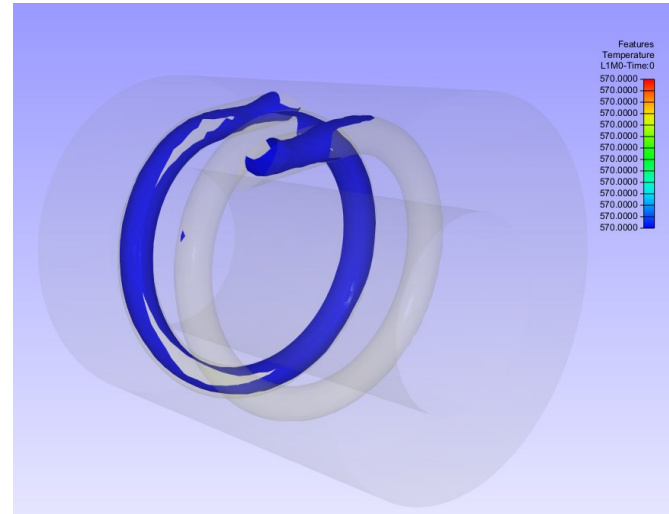
On-Selection Property Display – Selecting or highlighting a feature now displays its **input details**, allowing users to **review and update parameters** directly.



CFD Metadata Export – Supports exporting **metadata** to an **XML file** using command-line options:
`VMoveXSubmit.bat --meta-data --i <file_path> --o <xml_file_path>`

VMoveX 25.2 Enhancements

Iso-Surface Creation – Enables creation of **iso-surfaces for selected components** instead of the entire model, improving analysis focus and performance.



VCollab 25.2 Enhancements

VMoveCAD

- CatiaV5 is supported up to R2025 (R35)
- UG NX is supported up to UGNX2506 (until 2506.4000)
- Creo / ProE is supported up to Creo Parametric 12.0
- Inventor is supported up to 2026
- Parasolid is supported up to v38.0

VMoveJT

- Batch mode conversion is now supported

VCollabWeb

- Product tree performance improved
- Fixed the measurement issue with transformation.
- Fixed the background texture path issue
- Fixed the label position issue during full-screen mode, browser resizing and side bar pinning
- Fixed the richtext label container size issue

VCollab 25.1 Enhancements

VCollabPro

- 'Auto Resize' option is added for Image and Rich Text Labels
- Option is introduced to measure the Polygon Area in Measurements
- Option is introduced to get only visible label IDs in XY Plot
- Fixed the issues related to RichText Label feature
- Section Update - The display of the plane equation has been made consistent with the section equation display in VMoveCAE
- CreateResult - User can use NoR as a constant variable in the formula
- CompareMesh - Visibility Flag is introduced in the API to control the list of parts considered in comparison of models
- Bug Fix: Scale factor issue with large deformation result is handled
- Bug Fix: Transparency issue with xSetCAELegendColors API is handled
- Bug Fix: Issue with duplicate element Indices in hotspot finding is handled
- Bug Fix: Issue with Result Transformation using User Coordinate Systems is handled
- Big Fix: Issue with CompareMesh option while comparing the CAD models is handled
- Third-party libraries are upgraded to latest version to handle the security vulnerabilities

VCollabPro

- New Python APIs
 - xCompareMeshEx
 - xComparePartGeom
 - xComparePartGeomEx
 - xDeletePointSet
 - xSetPartColorEx
 - pxGetPartColorEx
 - xSetPartDisplayModeEx
 - xGetPartDisplayModeEx
 - xSetPartTransparency
 - xGetPartTransparency
 - xSetPartTransparencyEx
 - xGetPartTransparencyEx
 - xShowPartsIDEx
 - xGetPartIDVisibility
 - xSetPartRandomColor
 - xlsSamePartName
 - pxGetPartBoundsEx
 - pxGetPartSphericalBounds
 - xGetNoResultValue

VCollab 25.1 Enhancements

VMoveCAE

- Support for Multiple Abaqus ODB Versions
 - Usage: VMoveCAE.exe --odb_version=2017
- Introduced new part grouping options under 'Part Grouping Preferences'.
- Various bug fixes and stability improvements.
- Third-party libraries are upgraded to latest version to handle the security vulnerabilities

VMoveX

1. Supported FileFormats:

- CGNS (.cgns) - Steady State/Transient State
- Converge (.h5) - Steady State
- Enight (.case) - Steady State
- VTK (.vtk/.vtm/.vtp/.vtu) - Steady State
- OpenFoam (controlDict) - Steady State/Transient State
- Fluent (.cas.h5 and .dat.h5)- Steady State/Transient State

2.Parts Filtering

3.Results Filtering

4.Instance Filtering

5. Features:

- Cutsections for steady and transient models
- Flowlines for steady and transient models Flow line creation by Source point (considers a default source radius of 0.25 - user option will be provided in later version) and Source component.
- Stream Animation for steady flows illustrates the flow lines traced through specified integration points, representing the flow field behavior.
- Iso Surfaces for steady and transient models Iso surfaces can be created for available derived components of any results and scalar results. For example, in the case of Velocity, iso surface can be created for X, Y and Z components. Tensor results XX,YY,ZZ,XY,YZ,XZ.

6. Saving the translational Parameters.

7. VMoveCfdSubmit.exe

VCollab 25.1 Enhancements

VMoveCAD

- Catia V6 is supported up to R2025x
- UG NX is supported up to UGNX2406 (until 2406.7000)
- SolidWorks is supported up to 2025
- SolidEdge is supported up to 2025
- Third-party libraries are upgraded to latest version to handle the security vulnerabilities
- Bug Fix: Unwanted nodes are removed in CAD Scene Tree

VCollabWeb

- Multiprobe feature is enabled
- Added support for probing XY Plot labels.
- Enabled part selection by clicking on associated labels.
- Fixed color rendering issue for line geometries.
- Fixed issues related to image and rich text label issues
- Enhanced the product tree for better Filter and Search options
- Added deep probing functionality through transparent surfaces.
- Added support for measurement labels.
- Added model size and model center information in the frame info panel.
- Fixed the issue where section caps were not properly closed.
- Fixed XY plot issue when in full-screen mode.
- Fixed a probing glitch in CaxViewer that caused the model to appear black.

25.1 PPTx Export

- New Options added
 - Split Image => Model, legend images are captured separately and added to the slide. User can move/delete them.

